



AQ-MF-1

Under Sink Water Filter  
**Claryum<sup>®</sup>**  
**Direct Connect**

Owner's Manual



Meet clean, healthy water. Your new Aquasana system features Claryum® filtration that removes up to 99% of 77 contaminants including lead, PFOA/PFOS, pesticides, pharmaceuticals, and chlorine.

Enjoy the peace of mind that comes from knowing our award-winning filter technology is working for you.

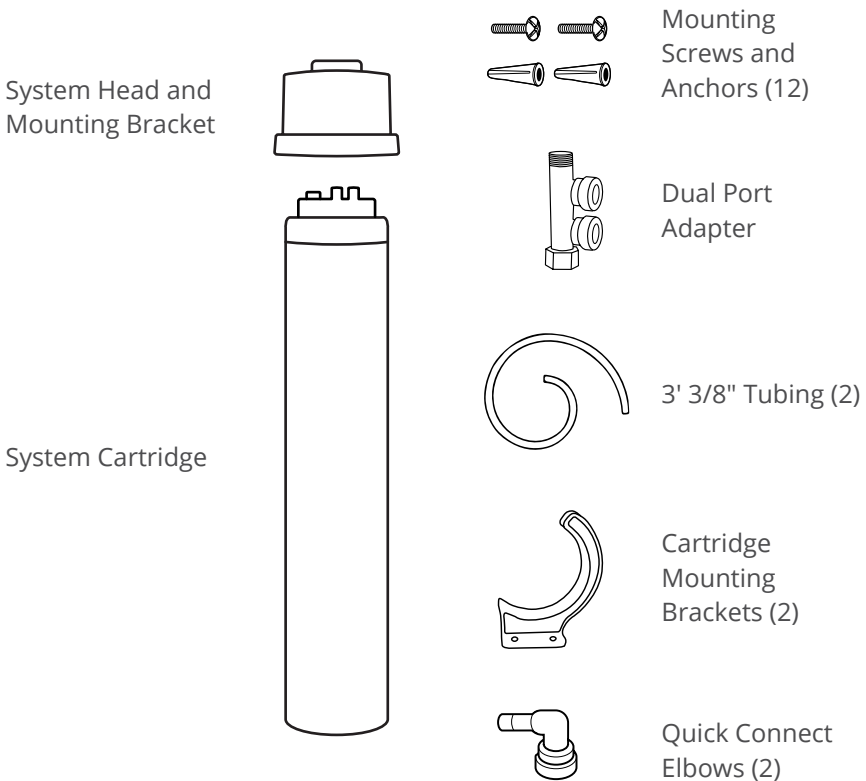
---

AQ-MF-1

# Under Sink Water Filter Claryum® Direct Connect

## TABLE OF CONTENTS

Box Contents .....	1
Use & Care .....	2
Installation Steps.....	3-6
Performance Data Sheet.....	7
Warranty .....	8
Water for Life® Program.....	9



Before beginning installation, please ensure all parts listed are present.  
If any part is missing or damaged, do not attempt to install the filter.  
Please contact Customer Service for replacement parts at (866) 662-6885.

### Tools recommended for installation:

- Variable Speed Drill w/ 7/32" Bit
- Adjustable Wrench
- Philips Head Screwdriver
- Level
- Pencil
- Measuring Tape

## Precautions

- **Do not** install this filter where the line pressure may exceed 125 psi. The operating pressure range for this filter is between 10psi – 125psi.
- Install on COLD water lines only (35° – 100°F).
- **Use caution** when installing the unit on a cabinet wall that backs up to a dishwasher. Screws could exceed cabinet width.
- Easiest installation option: horizontal floor mount to the bottom of your cabinet.
- It is recommended your system be installed inside and out of direct sunlight. The unit must be protected from both direct sunlight and freezing temperatures.
- Installation of the filter must comply with existing state and local plumbing codes. Aquasana is not liable for consequential or incidental damages due to improper installation.

## Cleaning

To clean your filter unit, wipe down the exterior with a damp cloth.

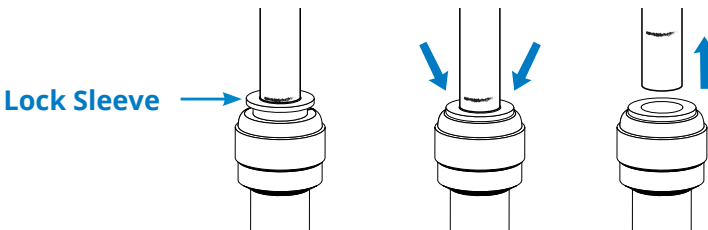
## Tips for Quick-Connect Fittings

### To Connect:

1. Measure 1/2" from the end of the tube and mark with a permanent marker.
2. Create a clean square edge for each tube by cutting the end with a utility knife.

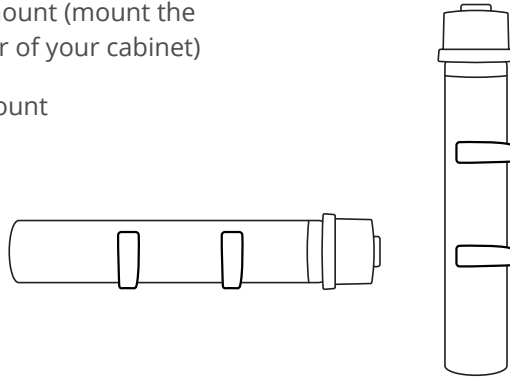
### To Disconnect:

1. Gently push the "Lock Sleeve" down with two fingers.
2. Pull tube to remove.



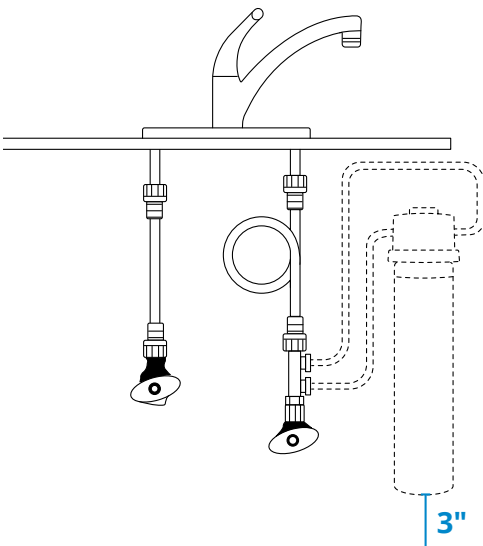
### Installation options

1. Horizontal floor mount (mount the system to the floor of your cabinet)
2. Horizontal wall mount
3. Vertical mount



### Installation steps

- ① Lightly place System Head onto cartridge (do not fully attach) to determine a suitable area under the sink to mount the system.



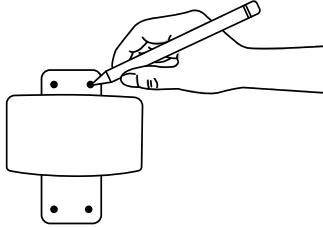
Three (3) inches of clearance from the base of the cartridge is needed for easy cartridge replacement.

The System Head must be installed less than three (3) feet from the COLD-water inlet valve.

**NOTE:** Remove System Head before proceeding to Step 3.

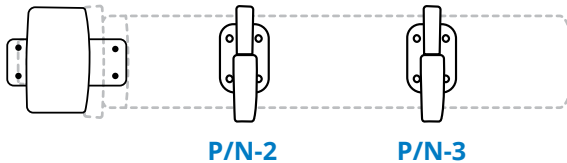
## 4 INSTALLATION STEPS

- 2 Place System Head in desired location and use a pencil to mark the top left mounting hole. Use the mounting hole chart provided, a level, and measuring tape to mark the remaining holes.

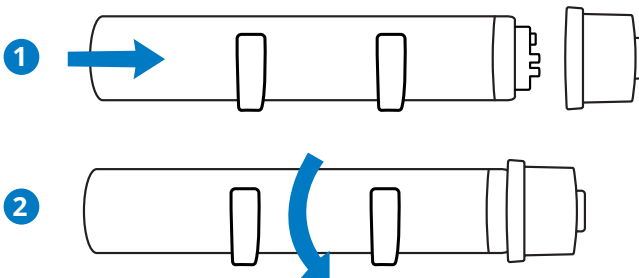


- 3 Use a 7/32" drill bit to drill the holes for plastic anchors. Carefully tap anchors in the the drilled holes with a hammer.
- 4 Using a Philips head screwdriver, mount the System Head and Cartridge Mounting Brackets using the provided screws.

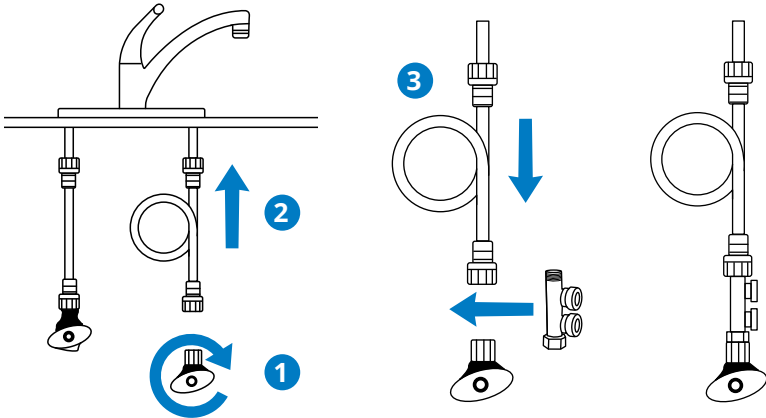
Ensure that the bracket marked P/N-2 is closest to the System Head.



- 5 Place Cartridge into brackets and connect to System Head by turning to the right.

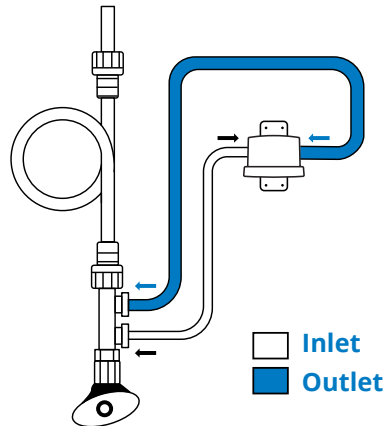


- 6 With an adjustable wrench, turn off and disconnect cold water supply. Attach Dual Port Adapter to shutoff valve and re-attach cold water line to the Dual Port Adapter.



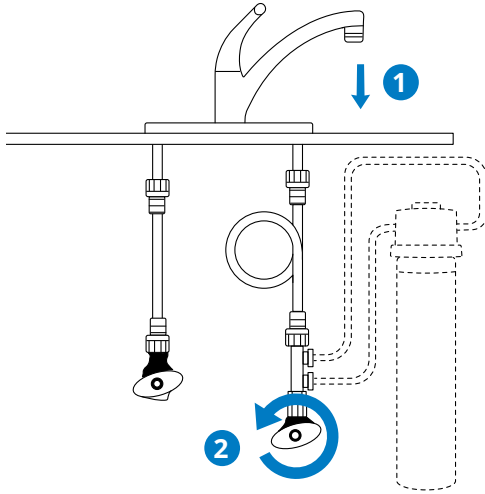
- 7 Connect 3/8" tubing to the bottom port of the Dual Port Adapter. Run the opposite end of the tubing to the inlet side of the System Head (marked "IN"), cut to length, and push tubing into the inlet until it stops.

Using the second piece of 3/8" tubing, connect one end to the top port of the Dual Port Adapter and run it to the right side of the System Head (marked "OUT") cut to length, and push tubing into the outlet until it stops.



**NOTE:** Use 3/8" quick connect elbows if necessary.

- 8 1. Turn on cold water to the kitchen faucet.
2. With the faucet on, slowly open the cold water shutoff valve.



- 9 Leave water running to flush cartridge for 15 minutes or until water is clear of carbon fines. While the system is flushing, check for leaks. Once the system is flushed, turn off kitchen faucet.



## Performance Data Sheet for the Aquasana Claryum® Direct Connect Water Filter

Models	Replacement	Operating pressure range	Rated capacity	Operating temp. range	Rated flow
AQ-MF-1	AQ-MF-1-R	10-125 psi 68.95-861.8 kPa	784 gallons 2,967 liters	35-100 F 1.66-37.78 C	1.5 gpm 5.67 lpm
Manufactured by: Aquasana, Inc. 6310 Midway Road · Haltom City, Texas 76117 · 866.662.6885					



Testing Performed under NSF/ANSI Standards 42 and 53 and in accordance with the California Department of Health Services Drinking Water Treatment Device Program. This system has been tested according to NSF/ANSI 42, 53 & 401 for reduction of the substances listed below. The concentration of the indicated substances in water entering the system was reduced to a concentration less than or equal to the permissible limit for water leaving the system, as specified in NSF/ANSI 42, 53 & 401.

NSF/ANSI 42	Min Reduction	Overall % Reduction	Results
Chlorine Reduction, Free Available	<0.5 mg/l	96.06%	Pass
Chloramine Reduction, Free Available	<0.5 mg/l	96.06%	Pass
Particulate Reduction	85%	99.9%	Pass

NSF/ANSI 53	Min Reduction	Overall % Reduction	Results
Cyst Live Cryptosporidium & Giardia	99.95%	>99.95%	Pass
Mercury Reduction pH 8.5	<2 ug/L	>96.7%	Pass
Mercury Reduction pH 6.5	<2 ug/L	>96.6%	Pass
Lead Reduction pH 6.5	<10 ug/L	>99.4%	Pass
Lead Reduction pH 8.5	<10 ug/L	>99.3%	Pass
MTBE Reduction	<5 ug/L	86.6%	Pass
Turbidity	<0.5 NTU	99.1%	Pass
VOC Surrogate Test	95%	99.4%	Pass
Asbestos	99%	>99%	Pass
Perfluorooctanoic acid (PFOA) & Perfluorooctane sulfonate (PFOS)	0.07 ug/L	95.8%	Pass

NSF/ANSI 401	Maximum Concentration	Minimum Reduction	Overall % Reduction	Results
Atenolol	30 ng/L	94.2%	94.2%	Pass
Bisphenol A	300 ng/L	98.80%	98.9%	Pass
Carbamazepine	200 ng/L	98.6%	98.6%	Pass
DEET	200 ng/L	98.7%	98.7%	Pass
Estrone	20 ng/L	96.30%	96.5%	Pass
Ibuprofen	60 ng/L	95.3%	95.4%	Pass
Linuron	20 ng/L	96.6%	96.6%	Pass
Meprobamate	60 ng/L	94.7%	94.7%	Pass
Metolachlor	200 ng/L	98.6%	98.6%	Pass
Naproxen	20 ng/L	96.3%	96.4%	Pass
Nonyl phenol	200 ng/L	97.50%	97.5%	Pass
Phenytoin	30 ng/L	95.50%	95.6%	Pass
TCEP	700 ng/L	98%	98%	Pass
TCPP	700 ng/L	97.8%	97.8%	Pass
Trimethoprim	20 ng/L	96.7%	96.7%	Pass

Organic chemicals included by surrogate testing				
VOCs (by surrogate testing using chloroform)	Drinking water regulatory level (MCL/MAC mg/L)	Influent/Unfiltered	Effluent/Filtered	Percent Reduction
alachlor	0.002	0.050	0.001	>98%
atrazine	0.003	0.100	0.003	>97%
benzene	0.005	0.081	0.001	>99%
carbofuran	0.04	0.190	0.001	>99%
carbon tetrachloride	0.005	0.078	0.0018	98%
chlorobenzene	0.1	0.077	0.001	>99%
chloropicrin	—	0.015	0.0002	99%
2,4-D	0.07	0.110	0.0017	98%
dibromochloropropane (DBCP)	0.0002	0.052	0.00002	>99%
o-dichlorobenzene	0.6	0.080	0.001	>99%
p-dichlorobenzene	0.075	0.040	0.001	>98%
1,2-dichloroethane	0.005	0.088	0.0048	95%
1,1-dichloroethylene	0.007	0.083	0.001	>99%
cis-1,2-dichloroethylene	0.07	0.170	0.0005	>99%
trans-1,2-dichloroethylene	0.1	0.086	0.001	>99%
1,2-dichloropropane	0.005	0.080	0.001	>99%
cis-1,3-dichloropropylene	—	0.079	0.001	>99%
dinoseb	0.007	0.170	0.0002	99%
endrin	0.002	0.053	0.00059	99%
ethylbenzene	0.7	0.088	0.001	>99%
ethylene dibromide (EDB)	0.00005	0.044	0.00002	>99%
haloacetanitriles (HAN)	—	—	—	—
bromochloroacetanitrile	—	0.022	0.0005	98%
dibromoacetanitrile	—	0.024	0.0006	98%
dichloroacetanitrile	—	0.0096	0.0002	98%
trichloroacetanitrile	—	0.015	0.0003	98%
haloketones (HK)	—	—	—	—
1,1-dichloro-2-propanone	—	0.0072	0.0001	99%
1,1,1-trichloro-2-propanone	—	0.0082	0.0003	96%
heptachlor (H-34, Heptox)	0.0004	0.025	0.00001	>99%
heptachlor epoxide	0.0002	0.0107	0.0002	98%
hexachlorobutadiene	—	0.044	0.001	>98%
hexachlorocyclopentadiene	0.05	0.060	0.000002	>99%
lindane	0.0002	0.055	0.00001	>99%
methoxychlor	0.04	0.050	0.0001	>99%
pentachlorophenol	0.001	0.096	0.001	>99%
simazine	0.004	0.120	0.004	>97%
styrene	0.1	0.150	0.0005	>99%
1,1,2,2-tetrachloroethane	—	0.081	0.001	>99%
tetrachloroethylene	0.005	0.081	0.001	>99%
toluene	1	0.078	0.001	>99%
2,4,5-TP (silvex)	0.05	0.270	0.0016	99%
tribromoacetic acid	—	0.042	0.001	>98%
1,2,4-trichlorobenzene	0.07	0.160	0.0005	>99%
1,1,1-trichloroethane	0.2	0.084	0.0046	95%
1,1,2-trichloroethane	0.005	0.150	0.0005	>99%
trichloroethylene	0.005	0.180	0.0010	>99%
trihalomethanes (THMs)	—	Influent/Unfiltered	Effluent/Filtered	Percent Reduction
bromodichloromethane (THM)	—	—	—	—
bromoform (THM)	0.080	0.300	0.015	95%
chloroform (THM)	—	—	—	—
chlorodibromomethane (THM)	—	—	—	—
xylenes (total)	10	0.070	0.001	>99%



System Tested and Certified by IAPMO R&T lab and IAPMO R&T against NSF/ANSI Standards 42, 53 & 401 and conforms to NSF Protocol as verified and substantiated by test data. Please refer to Performance Data Sheet for specific contaminant reductions.

- All contaminants reduced by this filter are listed.
- Not all contaminants listed may be present in your water.
- Does not remove all contaminants that may be present in tap water.



Filter is only to be used with cold water.



Systems certified for cyst reduction may be used on disinfected waters that may contain filterable cysts.



Filter usage must comply with all state and local laws.



See owner's manual for general installation conditions and needs plus manufacturer's limited warranty.



Testing was performed under standard laboratory conditions, actual performance may vary.



For use with municipally treated water only. Do not use with water that is microbiologically unsafe or of unknown water quality without adequate disinfection before or after the system.

**1**  
**YEAR**  
**LIMITED**  
**WARRANTY**

## **CLARYUM® DIRECT CONNECT AQ-MF-1** **1-YEAR LIMITED WARRANTY**

### **What is covered**

This Warranty covers defects in materials or workmanship in manufacturing of your Claryum® Direct Connect Water Filter, except as provided below.

### **For how long**

This warranty runs for 365 days from the date of purchase by a consumer "Warranty Period".

### **What is not covered**

This warranty does not cover filter cartridges and any products that were not installed in compliance with the instructions or that have been abused or operated incorrectly. It also does not cover incidental or consequential damages caused by a failure of the product. Finally, this warranty is voided if the product is used with parts that are not genuine Aquasana parts. This includes, but is not limited to: replacement filters, faucets, and diverter valves.

### **What Aquasana will do**

We will replace the defective part of the covered product and send it to you with installation instructions upon payment for shipping and handling per incident.

### **How to get service**

To receive service under this Warranty, you must contact Aquasana at 1-866-662-6885 or [warranty@aquasana.com](mailto:warranty@aquasana.com) within the Warranty Period to describe the problem to a customer service representative who will verify that the product is under warranty and arrange for delivery of a replacement part.

### **How state law applies**

This warranty gives you specific rights and you may have other rights which vary from state to state. Some states do not allow the exclusion or limitation of incidental or consequential damages, so the above limitation or exclusion may not apply to you.

### **Warranty Registration**

Warranty registration is not required for coverage under the Aquasana Limited Warranty and is not necessary for factory direct purchases made from [www.aquasana.com](http://www.aquasana.com). If you purchased from a retailer or dealer, please complete the online warranty registration form at [www.aquasana.com/warranty](http://www.aquasana.com/warranty).

Once registered online, we will have a record of your purchase and you will not be required to produce a proof of purchase for a warranty claim.



# water for life<sup>®</sup>

## **Replace your filters on time, without worry — auto-delivered to you, for less.**

It's important to change your filters using genuine Aquasana replacements for continued water filtration and optimum system performance. This is why we offer our no contract, auto-ship filter replacement program called Water for Life.



### **Free Shipping**

Replacements shipped directly to you, right when you need them, at no extra cost.



### **Discount Replacements**

Lock in a 15% discount on filters to ensure you always get the best price.



### **Extended Warranty**

Our performance promise to you – free replacement parts, just in case.



### **No Contract**

Replacing your filters is serious – but your commitment doesn't have to be.

## **CONTACT US TO LEARN MORE**



866-662-6885



[waterforlife@aquasana.com](mailto:waterforlife@aquasana.com)



### LOVE IT?

Let us know with a review on Aquasana, Amazon, or your retailer's website.



### NEED HELP?

Give us a call at 866-662-6885 and tell us what's going on.



Tested and Certified by IAPMO R&T lab and IAPMO R&T against NSF/ANSI 42, 53, 401 as verified and substantiated by test data.

**Aquasana, Inc.**  
6310 Midway Road  
Haltom City, Texas 76117  
866.662.6885 USA  
877.332.7873 Canada  
[www.aquasana.com](http://www.aquasana.com)