



Installation Instructions

AQ-5100, AQ-5200 & AQ-5300 Under Counter Water Filter
Single Stage (5100), Two Stage (5200) and Three Stage (5300) systems

Welcome to the Aquasana experience. You are about to enjoy clean, healthy water and the peace of mind that comes from knowing award-winning filter technology is working for you.



Chrome

Brushed Nickel

Oil-Rubbed Bronze



AQ-5300

- A AQ-5300 filter unit
- B Faucet (1)
- C Filter Cartridges (3)
- D Screws with anchors (2)
- E Faucet Rubber Washer (1)
- F Faucet Spacer (1)
- G Faucet Washer (1)
- H Faucet Nut (1)
- I 3"x1/4" Poly tubing (1)
- J Chrome nut (1)
- K Plastic collar (2)
- L Plastic tube insert (1)
- M 3"x3/4" Poly tubing (1)
- N Brass nut (1)
- O Brass tube insert (1)
- P 3/8" Brass Tee (1)



AQ-5200

- A AQ-5200 filter unit
- B Faucet (1)
- C Filter Cartridges (2)
- D Screws with anchors (2)
- E Faucet Rubber Washer (1)
- F Faucet Spacer (1)
- G Faucet Washer (1)
- H Faucet Nut (1)
- I 3"x1/4" Poly tubing (1)
- J Chrome nut (1)
- K Plastic collar (2)
- L Plastic tube insert (1)
- M 3"x1/4" Poly tubing (1)
- N Brass nut (1)
- O Brass tube insert (1)
- P 1/4" Brass Tee (1)



AQ-5100

- A AQ-5100 filter unit
- B Faucet (1)
- C Filter Cartridge (1)
- D Screws with anchors (2)
- E Faucet Rubber Washer (1)
- F Faucet Spacer (1)
- G Faucet Washer (1)
- H Faucet Nut (1)
- I 3"x1/4" Poly tubing (1)
- J Chrome nut (1)
- K Plastic collar (2)
- L Plastic tube insert (1)
- M 3"x1/4" Poly tubing (1)
- N Brass nut (1)
- O Brass tube insert (1)
- P 1/4" Brass Tee (1)

The AQ-5200 & 5300 comes in three designer finishes, Chrome, Brushed Nickel and Oil-Rubbed Bronze.

The AQ-5100 is only available with the Chrome finish.

The faucet may be mounted on the sink using an existing hole for a sprayer nozzle or soap dispenser, or by drilling a hole at least 1/2" in diameter. Be sure the location of the faucet allows the spout to extend slightly past the edge of the sink. Note: we recommend enlisting the services of an approved or certified professional if drilling is required.

Preparing for Installation

Please read entire installation guide before installing the filter system.

Tools Recommended for Installation

- Variable speed drill w/ 7/32" bit
- Adjustable wrench
- Measuring tape
- Bucket
- Phillips head screwdriver
- Hammer

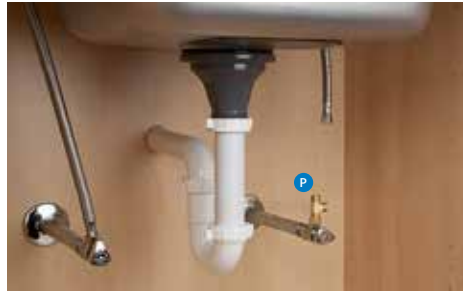
Before beginning installation, please ensure all parts listed are present. If any part is missing or damaged, do not attempt to install the filter. Please contact Customer Service for replacement parts at (866) 662-6885.

Estimated Installation Time: 45 minutes

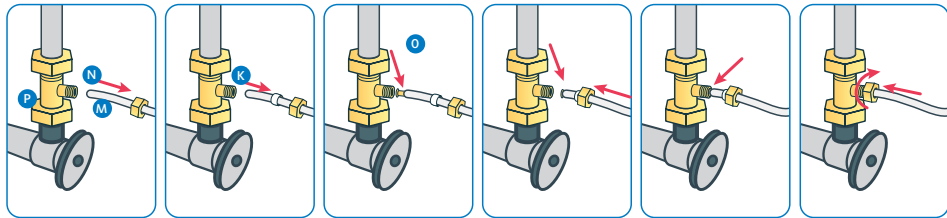
Easy to install



1 Unpack and unwrap contents. Turn off and disconnect the cold water supply.



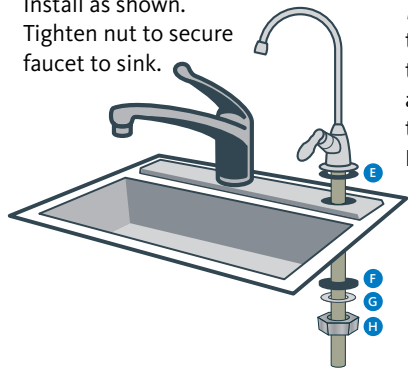
2 Attach threaded ends of supplied brass tee to the cold water supply line and shut-off valve; tighten using an adjustable wrench.



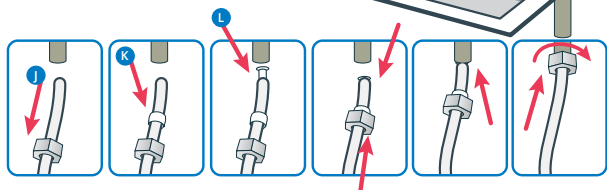
3 Attach white tube to the brass tee: Slide the compression nut onto the white tubing (with threads of the nut facing the end of the white tube). Next, slide the plastic sleeve onto the white tube. Place brass insert into the opening of white tube. Push the tip of the white tubing into the opening of the brass tee. While holding the white tube in place inside the brass tee, tighten the compression nut to compress the plastic sleeve and create a seal. NOTE: Use a wrench to ensure complete seal. Avoid over tightening.



4 Faucet Installation: Install as shown. Tighten nut to secure faucet to sink.



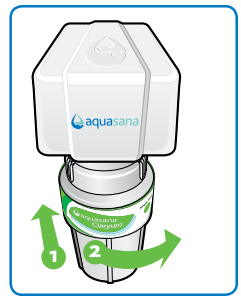
5 Faucet Connection: connect the outlet hose to the base of the faucet by sliding the chrome nut onto the tube followed by the white collar. Place the white insert into the end of the tube. Press the tube against the faucet base and slide the nut and collar up to the threads. Use wrench to ensure seal is sufficiently tight. Note: Avoid over tightening.



6 Unit Installation: Select a space under your sink for the filter unit that is at least 12 inches from the bottom of your cabinet and allows for easy access to your cold water supply and for filter replacements. Use the mounting holes located at the back of the unit to mark the wall screw placements with a pencil. Center to center hole distances:
AQ-5100: 41mm
AQ-5200: 65mm
AQ-5300: 98mm



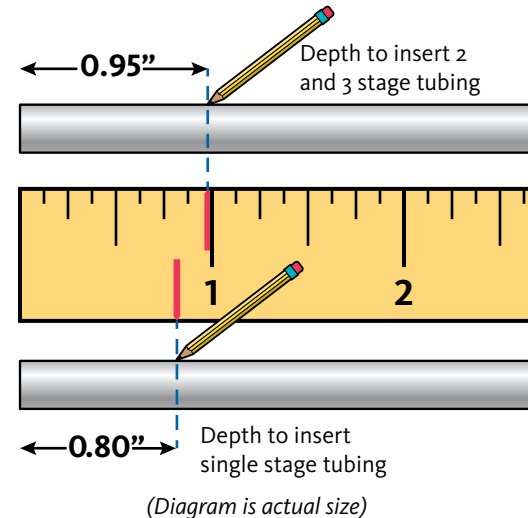
7 Use a 7/32" drill bit to drill holes for the plastic anchors provided. Carefully tap the anchors into the drilled hole with a hammer. Mount unit to the wall with the screws. For the AQ-5200 and AQ-5300 — Pull the protective plastic strip from the battery compartment. The red LED should flash and beep five (5) times to indicate that the battery is installed correctly.



8 Attach each sump to the bottom of the unit housing. Align connection points, push the sump up and turn to the right. Ensure that the sump is locked in.



9 Connect supply lines: insert tubing from the tee fitting into the inlet side and insert tubing from the faucet into the outlet side. Use diagram on the right to mark tubing depth to ensure they get inserted completely. **It is VERY IMPORTANT to insert tubing completely so leaking does not occur.**



10 Turn the cold water on. Check for leaks and proper installation: place a towel under the filter unit and check for leaks. Allow water to run for 10 minutes to flush carbon fines. Note: Never use oils to lubricate the O-rings; O-rings come pre-lubricated.

Care and Maintenance

To clean your filter unit, wipe down the exterior with a damp cloth.

For the AQ-5200 and AQ-5300 only:

Once filters are at 95% capacity (about every 6 months), the battery alarm will sound and flash red when water is flowing and will continue for 15 seconds once water is turned off. Change the battery every time you replace your filters. The battery is included with the filter replacement cartridges.

Pure Satisfaction



All Aquasana products offer a 90-day 100% satisfaction guarantee. (A 1-year warranty is included, which covers defects in materials and workmanship.) If for any reason you are not satisfied with your purchase, simply call us or the dealer you purchased from. A Return Authorization Code and a full refund will be promptly issued upon return. Thank you for choosing Aquasana!

This filter system is designed and tested for use with genuine Aquasana parts, including replacement filters, faucet and all hardware. Use of parts from other manufacturers may result in loss of contaminant reduction performance, system damage or failure. Use of parts from other manufacturers will also void your warranty. Please visit www.aquasana.com for all replacement parts.

For conditions of use, health claims certified by the California Department of Public Health, and replacement parts see product data sheet.

California Department of Public Health Certification Number 13-2173.

AQ-5100

Replacement cartridge:
AQ-5100R

Rated service flow:
0.5 gpm

Max capacity:
200 gal

Min working pressure:
20 psi (1.40 kg/cm²)

Max working pressure:
80 psi (5.62 kg/cm²)

Min operating temperature:
40° F (4.44° C)

Max operating temperature:
90° F (32.22° C)

AQ-5200

Replacement cartridge:
AQ-5200R

Rated service flow:
0.5 gpm

Max capacity:
500 gal

Min working pressure:
20 psi (1.40 kg/cm²)

Max working pressure:
80 psi (5.62 kg/cm²)

Min operating temperature:
40° F (4.44° C)

Max operating temperature:
90° F (32.22° C)

AQ-5300

Replacement cartridge:
AQ-5300R

Rated service flow:
0.5 gpm

Max capacity:
600 gal

Min working pressure:
20 psi (1.40 kg/cm²)

Max working pressure:
80 psi (5.62 kg/cm²)

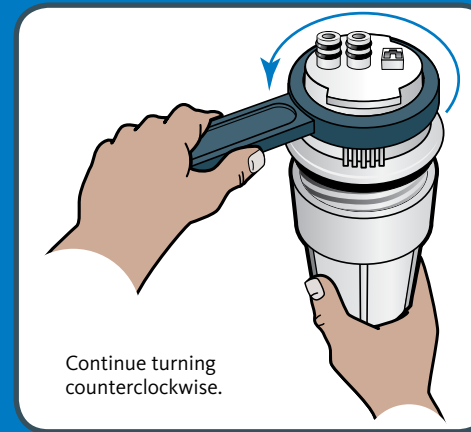
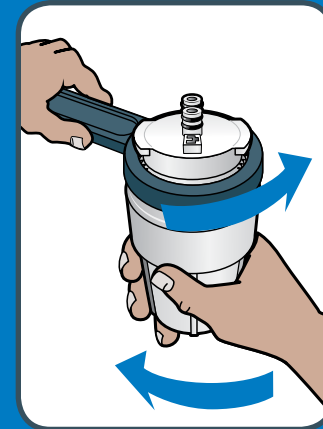
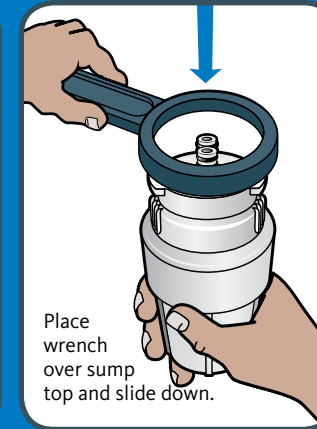
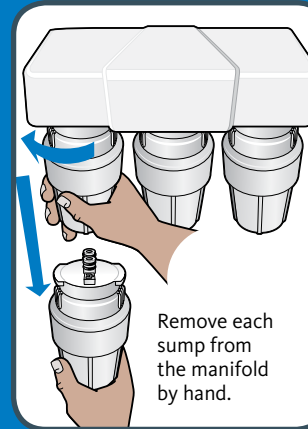
Min operating temperature:
40° F (4.44° C)

Max operating temperature:
90° F (32.22° C)

Do not use with water that is microbiologically unsafe or of unknown water quality without adequate disinfection before or after the system. Systems certified for cyst reduction may be used on disinfected waters that may contain filterable cysts.

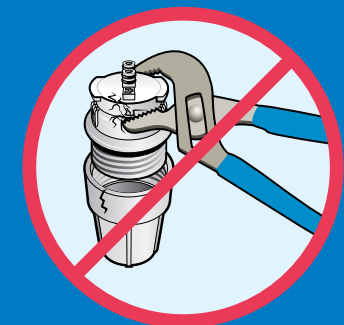
Precautions:

- Filter is only to be used with cold water.
- If you experience a leak at the hose connection, disconnect and re-seat the hose.
- Installation must comply with local laws.
- Aquasana is not liable for consequential or incidental damages due to improper installation.



WARNING

Do not use tools to remove or tighten sumps. Over tightening can cause damage and result in leaking. Hand tighten only.





Aquasana, Inc.

6310 Midway Road
Haltom City, Texas 76117
866.662.6885 USA
877.332.7873 Canada
www.aquasana.com

For exclusive deals

 facebook.com/aquasana
 twitter.com/aquasana



System tested and certified by NSF International against NSF/ANSI Standard 42, 53 & 401 and conforms to NSF protocol P473 for reduction of claims specified on the Performance Data Sheet and at nsf.org.